

Sustainability highlights

2018

CONTENT

01 Campus and facilities

02 Sustainability initiatives

03 Research on Sustainable Development Goals (SDG)

04 Cross-sectoral dialogue

05 Collaborations and outreach

ISCTE-IUL campus and facilities



UNIVERSITY CAMPUS

ISCTE-IUL is strategically located in the centre of Lisbon.

The ISCTE-IUL campus offers a wonderful atmosphere and facilities which include four buildings (45.000 m²), one of which, Building II, opened in 2003 and received the Valmor Prize, Portugal's foremost award for architectural excellence.

Access to the campus is free and citizens can use our green spaces and most facilities.

geral@iscte-iul.pt



UNIVERSITY LIBRARY

The ISCTE-IUL Library is linked to all departments and schools in the scientific areas of teaching and research.

Students also have free remote access to excellent online bibliographical tools, such as the Online Library of Knowledge (over 28,000 full-text scientific articles), Web of Science, SCOPUS, ABI/Inform Complete, JSTOR, Business Source Complete, Hospitality and Tourism, PsycInfo, PsycArticles, Academic Search Complete, among others.

biblioteca@iscte-iul.pt



UNIVERSITY HALL OF RESIDENCE

The Professor José Pinto Peixoto Hall of Residence meets the needs of students and lecturers.

It is located in the 16th-century Santos-o-Novo Monastery, which is a national monument. It stands on a hill overlooking the River Tagus in the eastern part of Lisbon, and commands a magnificent view.

residencia@iscte-iul.pt



HEALTH AND WELLBEING

ISCTE-IUL has different spaces and groups dedicated to promote culture, art and sports. It has a fitness track, a court for handball and 5- and 7-a-side football and a multi-purpose gym.

Quality of life on campus is also the responsibility of a clinic (run by SAMS) offering several medical specialties as well as nursing and diagnostic tests and exams.

desporto@iscte-iul.pt

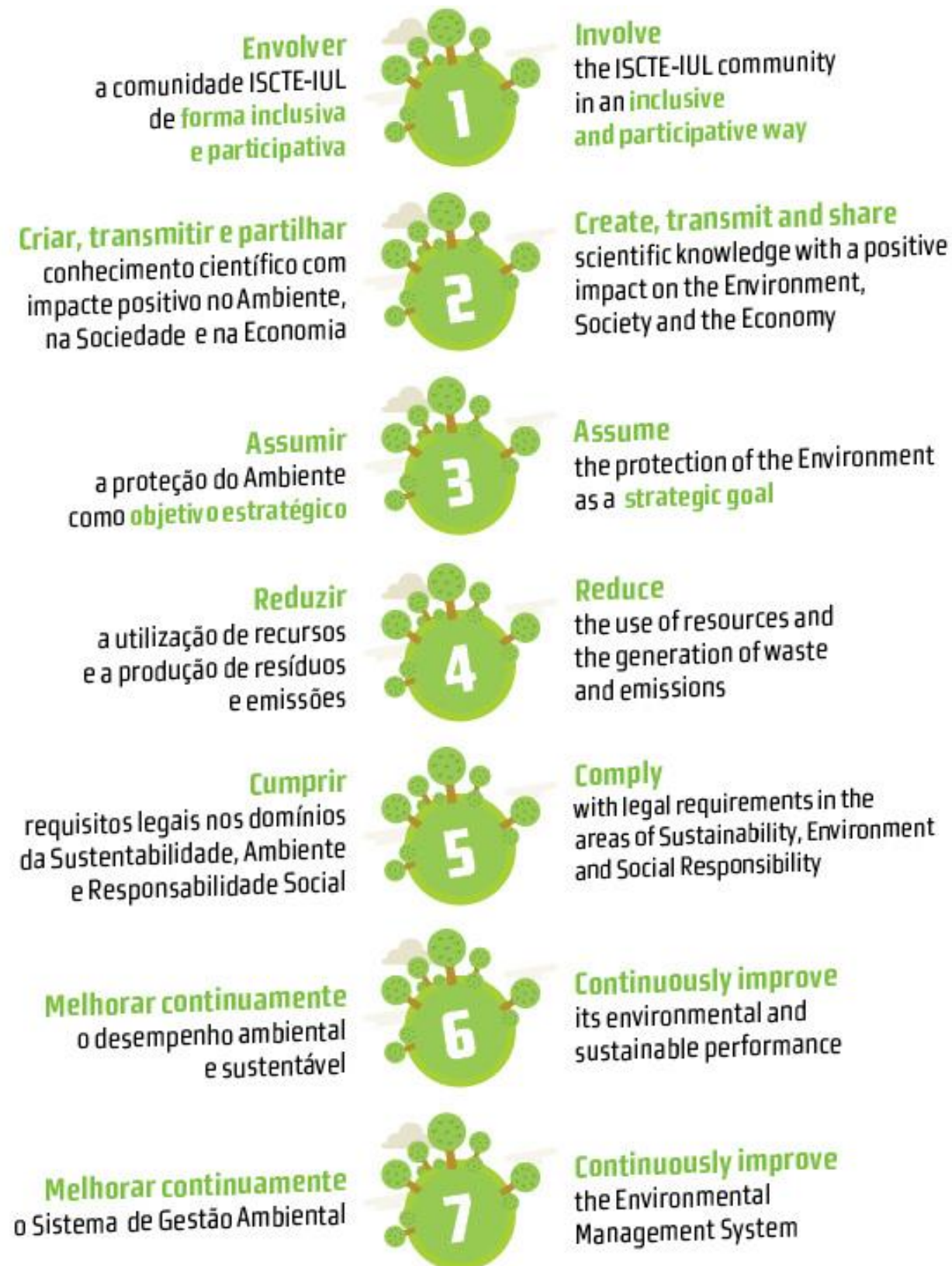
ISCTE-IUL abides by ethical, responsible and sustainable values and principles.

The main values in its institutional culture are freedom, diversity, democracy, equality, honesty and integrity. It also takes account of the impact of its decisions and activities on its own community and society as a whole. This includes a concern for equality and social justice, as well as the environment in all its dimensions.

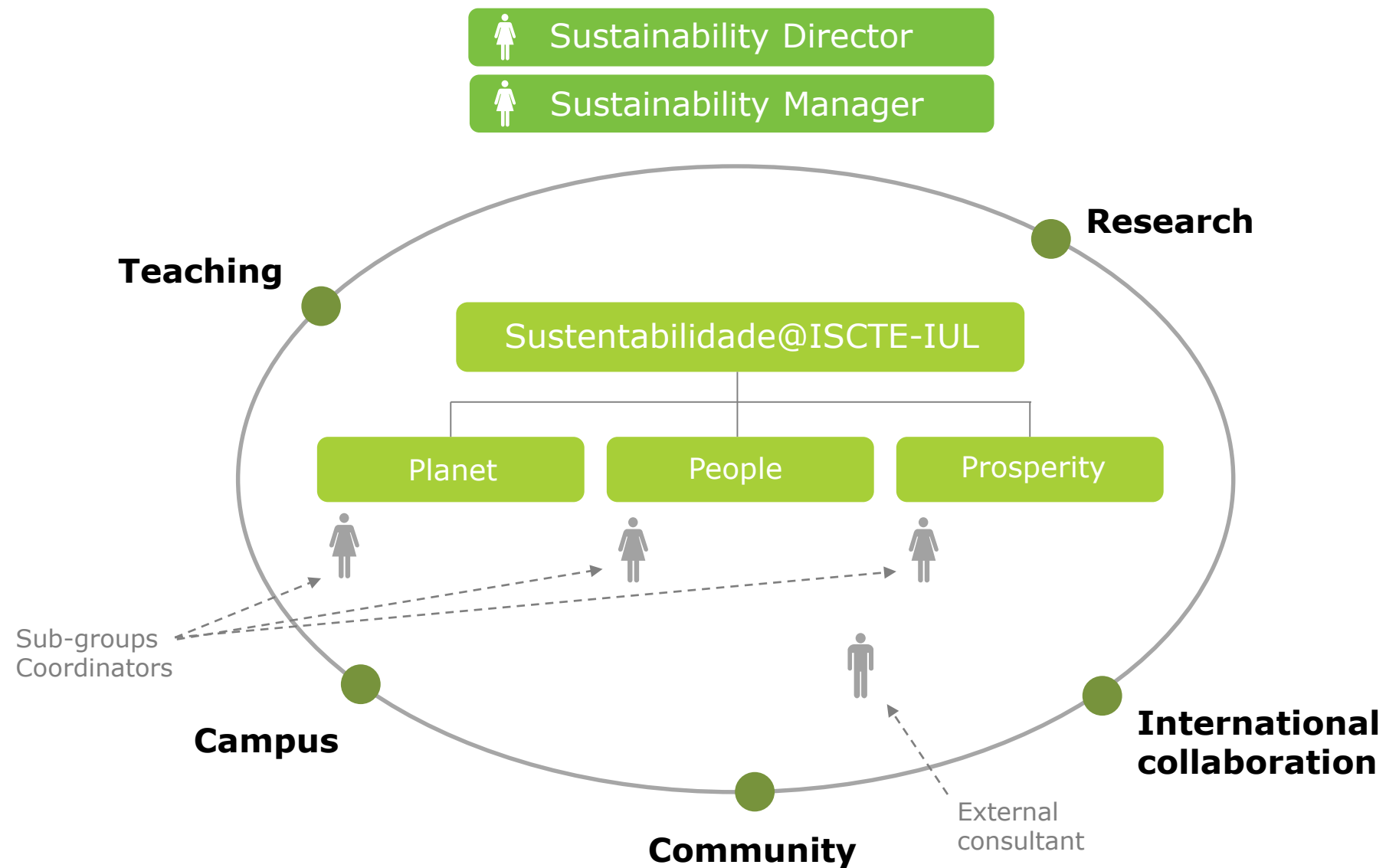
ISCTE-IUL's institutional, social, environmental and economic sustainability is central to its strategy and is considered in management, education, research and knowledge transfer to society.



ISCTE-IUL Sustainability Policy



Governance for sustainability



A more sustainable campus

1st

Portuguese
University with
Environmental
Certification
(ISO 14001:2015)

59%

Recycled waste

56

Hours of training
on sustainability

1100 calorias
≈ 1,10 kcal



INDIFERENCIADOS

PLÁSTICO/METAL

VIDRO

PAPEL/CARTÃO

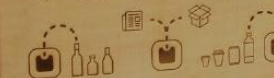
Reduz o
consumo de
energia
Reduce energy
consumption
Apaga as luzes
Turn off the lights



Racionaliza
o consumo de água
Reduce water
consumption
Fecha a torneira
Turn off the tap



Promove a reciclagem
Recycle More
Separa os resíduos
Separate your waste



Usa menos o carro
Use your car less
Opta pela mobilidade sustentável
Choose sustainable mobility



Campaign videos to reduce the use of plastic on campus



We have recently taken the following actions:

- Increased the use of reusable glass bottles on meetings and other events. Plastic bottle purchase is no longer allowed;
- Awareness videos highlighting the importance of reducing the use of plastic bottles.
- Reduced the use of single-use plastics in canteens or other food services;

Awareness campaign video highlighting the consequences of using plastic

Straws provided by fast food restaurants in Portugal in one year can circle the planet earth around 5 times. On 15 March 2018, Quercus (National Association for Nature Conservation) was at ISCTE-IUL to raise awareness among the academic community.



Initiatives | Green Talks

In May 2018 the 3rd edition of the Green Talks - Sustainability Challenges took place, organized by ISCTE-IUL's Student Association .

This year's edition covered the following areas:

- **Sustainability issues in higher education**
- **Food waste and redistribution**

We had the participation of NGO's, government departments, University representatives and alumni.



Vencedores da primeira edição de ArtZero

Os vencedores da 1.ª edição de ArtZero foram:

1.º Prémio Júri: MicroPlástico no prato de Rui Dias



Winner of the art contest on sustainability:
“Microplastics in your plate”

The European Week for Waste Reduction (EWWR) is an initiative promoting the implementation of awareness-raising actions about sustainable resource and waste management during a single week.

ISCTE participated in the 2018 edition with several activities and awareness campaigns.

17 a 25 de Novembro de 2018 - Semana Europeia de Prevenção de Resíduos



O ISCTE-IUL associa-se à Semana Europeia da Prevenção de Resíduos com as seguintes atividades:

- 20 novembro das 14h30 às 17h00 – Visita ao Ecocentro do Lumiar (mediante inscrição);
- 21 novembro das 9h45 às 10h30 – Caminhada com recolha de resíduos (Praça do Edifício Seda Nunes);
- 22 novembro das 10h00 às 12h00 – Ação de sensibilização, em parceria com a Câmara Municipal de Lisboa (mediante inscrição);

Exposição ArtZero - **VOTE** até dia 09 de dezembro na obra que mais goste. A obra com mais likes vai ganhar!

(visite a exposição na sala de estudo do edifício Sedas Nunes)

Saiba mais sobre esta semana em <http://www.ewwr.eu>

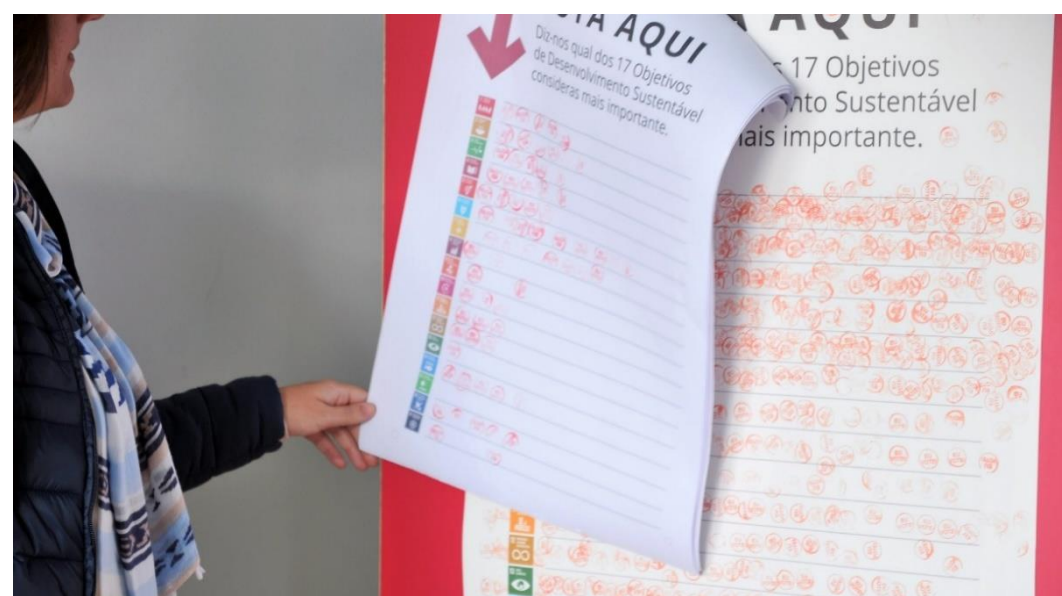
Outras informações sobre estas ou outras atividades da Sustentabilidade ISCTE-IUL, por favor [contacte-nos](#).

European Week for Waste Reduction actions.

Initiatives | Sustainable Development Goals exhibition

In December 2018 ISCTE-IUL hosted the exhibition “*Vamos tod@s pelos Objetivos Globais!*” as part of its strategy to promote the Sustainable Development Goals (SDG’s).

This exhibition was organized in partnership with the Development Cooperation Intermunicipal Network (RICD) and the Instituto Marquês de Valle Flôr (IMVF). The exhibition was developed as part of the Networks for Development: Global Education for More Efficient Cooperation project, to promote the Sustainable Development Goals (SDGs).



Our commitment with Sustainable Development Goals (SDG)

In accordance with the United Nations 2030 Agenda for Sustainable Development, we consider the [Sustainable Development Goals](#) (SDG) fundamental to eradicate poverty, protect the environment and promote prosperity and well-being for all by 2030.

ISCTE-IUL, within the scope of its Sustainability Policy, recognises its responsibility as a higher education institution that intends to contribute actively to the SDG.

Main goals for 2018-2021:

- **Teaching:** promote the integration of sustainability contents in Curricular Units in the three study cycles;
- **Research:** increase research activity directed towards the achievement of the Sustainable Development Goals.

In order to track our contributions to tackle the SDG, we have developed a tool where academic staff can identify the relevant SDG for their classes and research.



ISCTE-IUL developed a tool to categorise curricular units according to the Sustainable Development Goals (SDG)

To promote the integration of sustainability content in curricular units in the three study cycles, we have made available the possibility to associate the Curricular Unit with the Sustainable Development Goals using the [Fénix platform](#).



ISCTE-IUL developed a tool to categorise publications and projects according to the Sustainable Development Goals (SDG)



Explore this new tool at: <https://ciencia.iscte-iul.pt/sustainable-development-goals>

Research impact

ISCTE-IUL collaborates with leading national and international universities and research networks, as well as with public, private and third sector organizations.

Research impact is recognized, each year, through Scientific Awards that distinguish excellent scientific publications by professors and researchers.

ISCTE-IUL also [promotes activities](#) aimed at social recognition of science and extension of scientific culture to the general public.

Research Units

ISCTE-IUL has eight units performing high-quality research, recognised in periodical assessments by the Portuguese Foundation of Science and Technology (FCT).

- **BRU-IUL**, Business Research Unit.
- **CEI-IUL**, Center for International Studies.
- **CIES-IUL**, Center for Research and Studies in Sociology.
- **CIS-IUL**, Center for Psychological Research and Social Intervention.
- **CRIA-IUL**, Centre for Research in Anthropology.
- **Dinâmia/CET-IUL**, Centre for Socioeconomic and Territorial Studies.
- **ISTAR-IUL**, Information Sciences, Technologies and Architecture Research Center.
- **IT-IUL**, Instituto de Telecomunicações Branch.

Policy development and research

Highlight

The project investigates the conditions in which the process of transition to a sustainable energy system can also drive the transformation of existing (often declining) industries, focusing on the construction of a new system around ocean energy technologies and its contribution to the development of a Sea Economy.

The project will run from 2018 to 2021.

OceanTrans

Ocean energy technologies transformative potential

The research combines contributions from socio-technical transitions and economic geography to contextualise the process of new system development, in order to investigate the nature and effects of its interplay with contiguous industries that can offer complementary competences and thus become part of new recombination processes. These processes are also contextualised in space and the implications of their multi-scalar nature for regional development are investigated.

The results can support the definition of policy mixes that promote alignment between heterogeneous actors and enhance learning from their interaction, leading to sustained industrial diversification.

More information: [DINAMIA'CET](#)



Policy development and research

Highlight

SPLACH aims to produce a comprehensive and coherent body of transformative planning policies, implementation mechanisms, planning models and decision support systems, able to guide Portuguese planning practice, including the public and the private sectors, towards a rapid and effective transition to a low carbon and social inclusive urban system.

The project will run from 2016 to 2019.



SPLACH | Spatial Planning for Change

Planning can, and should, constitute a transformative device in our cities in Europe and elsewhere, particularly in the present times and with a view into the long term. Indeed, current changes seem far more deep within the existing urban tissues experiencing profound recompositions of functions and activities, than in physical terms, strictly speaking, where past investments in infrastructures and in the built environment seemed to have exceeded the real demand and generated a surplus of the building stock that, some years later, still remains partially empty or underused.

The Spatial Planning for Change (SPLACH) programme draws on some of the main areas of knowledge of three research centres CITTA, DINÂMIA'CET-IUL and GOVCOPP. Two to three main areas of knowledge were identified for each centre: post carbon cities, transformative policies, spatial planning, socio-technical system, food security, services of general interest, tourism and modelling. Based on these areas and on the research strategy of each centre, seven join Projects (or Work Packages/WP) were identified: contemporary spatial dynamics, transition paths, food security and sustainability, urban metabolism, sustainable tourism, planning services of general interest in times of austerity and, finally, the potential of transformation of public policies.

The development of three of these WP will be supported by an eight WP on urban modelling. One of the main goals of SPLACH is the production of a comprehensive and coherent body of development control and transformative planning policies, implementation mechanisms, planning models and decision support systems, able to feed and guide Portuguese planning practice including the public and the private sectors and the plan making and the licensing stages towards a rapid and effective transition to a low carbon and social inclusive urban system.

More information: [DINÂMIA'CET-IUL](#)

Highlight

This is a four-year project that will study European experiences that promote the health of communities and at the same time are environmentally sustainable.

The consortium is led by the non-governmental Belgian organization EuroHealthNet and has the scientific coordination of University College London.

The project will run from 2016 to 2019.



Policy development and research

INHERIT - INter-sectoral Health Environment Research for InnovaTions

The Centre for Psychological Research and Social Intervention in ISCTE – Instituto Universitário de Lisboa, is one of the partners in "Inherit", an international project that was awarded in August 6 million euros of European funds Horizon 2020 to study good practices to simultaneously defend health and the environment.

The consortium is led by the non-governmental Belgian organization EuroHealthNet and has the scientific coordination of University College London, where Michael Marmot, professor of epidemiology and the public health is a worldwide reference in the field of health inequalities. The project is coordinated in CIS-IUL by Sibila Marques and Maria Luisa Lima and researchers Cristina Godinho and Sílvia Luis are part of the team.

It is a four-year project that will study European experiences that promote the health of communities and at the same time are environmentally sustainable. The Re-Food movement, launched in the Lisbon area, and social gardens that bloom throughout Portugal are some of the most interesting cases considered to be studied and replicated in other countries.

More information: [INHERIT](#) e [CIS-IUL](#)

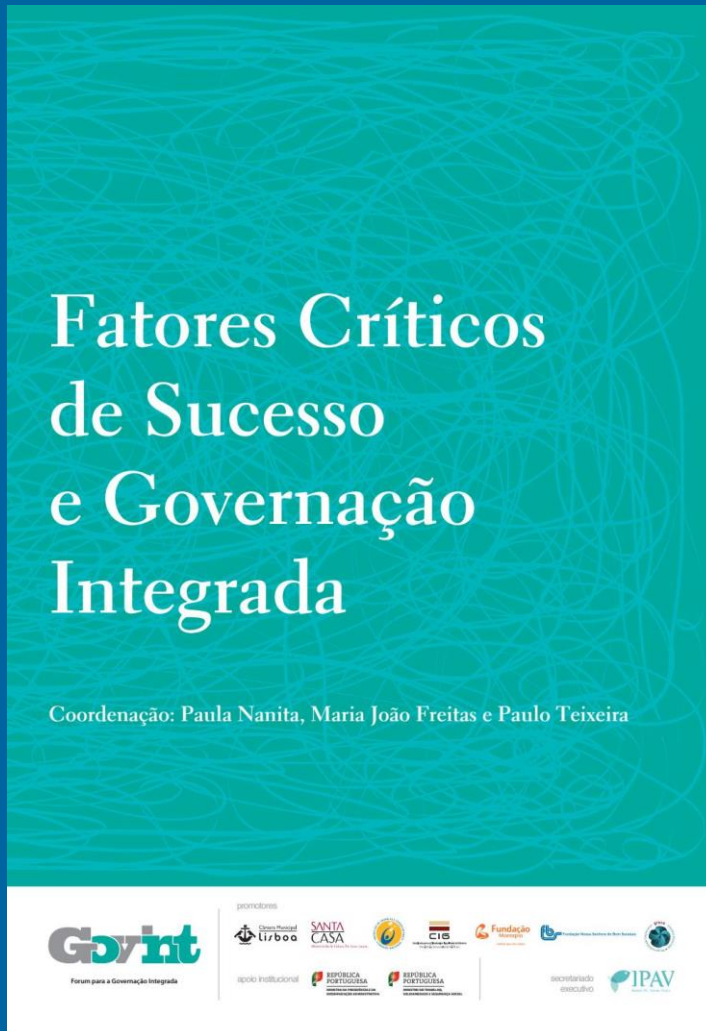
Providing expert advice

Governança Integrada (GovInt)

On 30-31 January 2018, Ana Simaens participated in the annual conference of the Forum para a Governança Integrada (GovInt), a think tank of public and private institutions collaborating for the resolution of complex social problems through integrated governance models allowing more effectiveness and efficiency.

After being an expert in GovInt's working group on Leadership since 2016, our researcher coordinated the 2018 Conference's Workshop "GovInt leader: systematic and collaborative".

More information: [BRU-IUL](#)



Highlight

Currently a plastic bags tax is 0,08€, plus VAT (23%). This project aims to assess the impact of such measure on society, particularly its economic and psychosocial impact.

The project will run from 2017 to 2018.



Providing expert advice

Taxa sobre os sacos de plásticos leves: Impactes económicos e sociais

Os sacos de plástico, em conjunto com as garrafas de plástico, constituem 70% dos resíduos que se acumulam nos mares, tendo impactes negativos nos ecossistemas marinhos, na economia e no turismo local.

Em Portugal, a Lei que cria a contribuição sobre os sacos de plástico leves é a Lei n.º 82-D/2014, de 31 de dezembro, que aprova a Reforma da Fiscalidade Verde. A lei entrou em vigor no dia 1 de janeiro de 2015, tendo os produtores, importadores e adquirentes intracomunitários de sacos de plástico leves passado a cobrar a contribuição a distribuidores, retalhistas e comerciantes a partir de 31 de janeiro de 2015, e os consumidores finais a pagar a contribuição a partir do dia 15 de fevereiro de 2015.

O valor da contribuição sobre os sacos de plástico leves é de 0,08 €, acrescido do IVA à taxa legal em vigor (23%), por cada saco de plástico. No momento em que estão para se completar três anos da entrada em vigor da lei importa avaliar os seus impactes na sociedade, particularmente no âmbito económico e psicossocial.

More information: [BRU-IUL](#) e [CIS-IUL](#)

Note: This content is only available in Portuguese.

Cross-sectoral dialogue

Highlight

In 2018 ISCTE participated in the 5th Responsible Management Education Research Conference, that took place in Cologne, Germany.

Principles of Responsible Management Education (PRME)

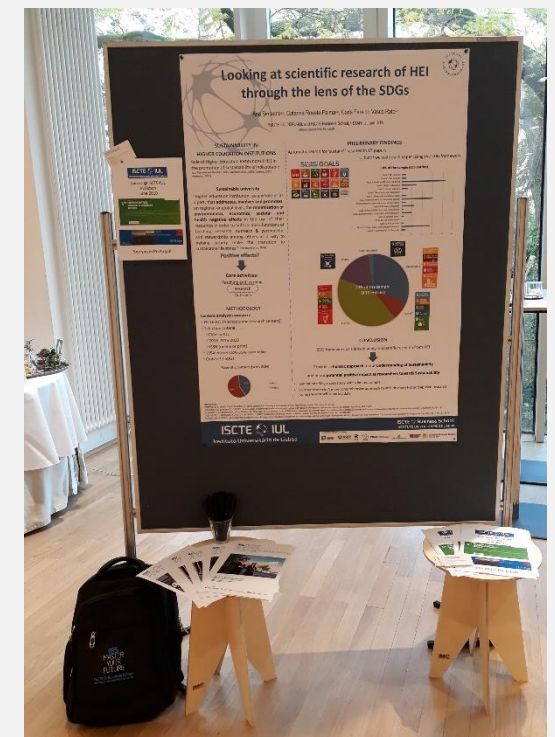
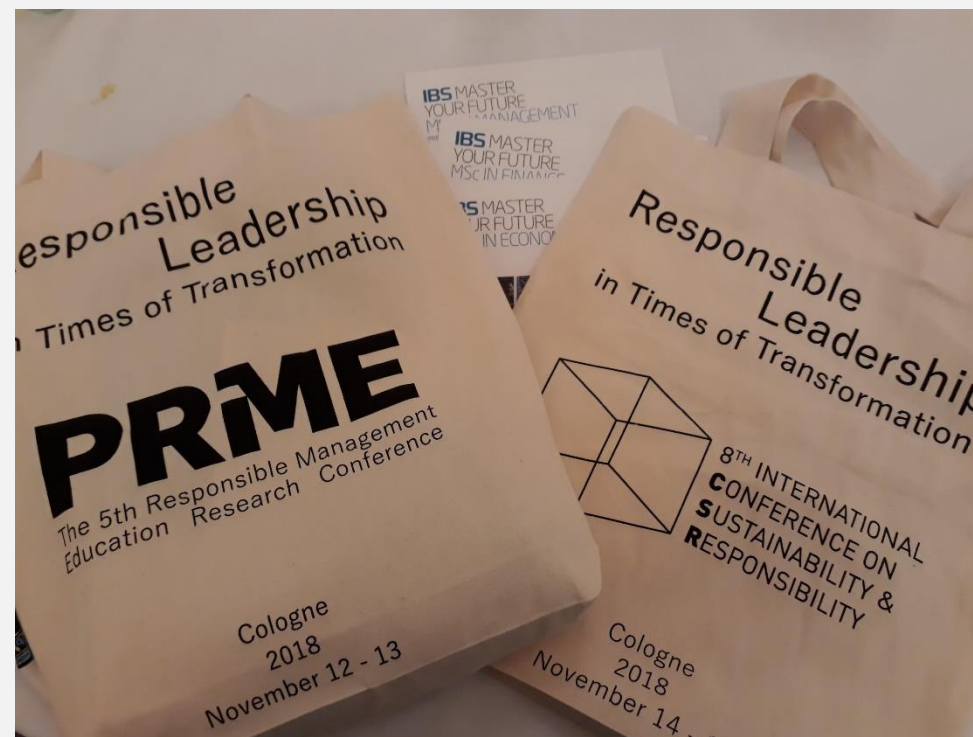
ISCTE Business School was accepted as a member of PRME on February 2011. As an institution dedicated to creating ethical, effective and holistic leaders for the 21st Century, we not only remain committed to integrating the Principles of Responsible Management Education throughout all our institutions, but hope to help lead the way in developing new ways of teaching the competencies needed in the ever-evolving, ever more complex global business environment of the 21st Century.

More information: [ISCTE Business School](#)

5th Responsible Management Education Research Conference

In November 2018, ISCTE has participated in a conference on: **Leadership Development for Advancing the Implementation of the Sustainable Development Goals**. The goal of this conference was to discuss how research and the management education community, in collaboration with other stakeholders, can best support the initiatives of the UN Global Compact and PRME that focus on responsible leadership development in order to advance the implementation of the UN SDGs.

More information: [PRME Regional Chapter](#)



Cross-sectoral dialogue

5th International Forum: Sustainability, Innovation and Participation

ISCTE-IUL celebrated in September 2018, 10 years of Social Work Academic Education.

The event had conferences with the participation of international academics of Social Work discussed opportunities and challenges on social work research as well as new opportunities to innovate in the social work area.

This event counted with the presence of several international organizations, such as UNICEF, OIT, TMI Healthcare UK, CARITAS, UNHCR-ACNUR, Banco Mundial, AMI, Comité dos Direitos Civis e Políticos das Nações Unidas and Associação ZERO.



Highlight

The main goal of RurAction is the characterization of social entrepreneurship in structurally weak rural regions in six European countries (Germany, Austria, Denmark, Greece, Poland, and Portugal).

The project will run from 2016 to 2020.

International collaboration

Social Entrepreneurship in Structurally Weak Rural Regions: Analysing Innovative Troubleshooters in Action

This is a Marie-Curie project with the coordination of the Leibniz Institute (Germany). The research on social entrepreneurship in different rural territories considers diverse analytical dimensions, such as:

- i) characterization of structurally weak rural regions;
- ii) the role of networks in social innovation and entrepreneurship dynamics;
- iii) forms of social innovation, its dissemination and impact.

Besides universities, the project integrates also local development associations where stages take place. In Portugal Baixo Alentejo is the weak structural region and ADCMoura is the association of local development that will receive the early stage researchers of several countries.

More information: [DINÂMIA'CET-IUL](#)



Highlight

Varieties of Democracy (V-Dem) is a new approach to conceptualizing and measuring democracy.

It is a collaboration among more than 50 scholars worldwide which is co-hosted by the Department of Political Science at the University of Gothenburg, Sweden; and the Kellogg Institute at the University of Notre Dame, USA.

The project will run from 2014 to 2020.



International collaboration

Partners of V-Dem network

Varieties of Democracy (V-Dem) is a new approach to conceptualizing and measuring democracy. We provide a multidimensional and disaggregated dataset that reflects the complexity of the concept of democracy as a system of rule that goes beyond the simple presence of elections.

The V-Dem project distinguishes between seven high-level principles of democracy: electoral, liberal, participatory, deliberative, egalitarian, majoritarian and consensual, and collects data to measure these principles. It is a collaboration among more than 50 scholars worldwide which is co-hosted by the Department of Political Science at the University of Gothenburg, Sweden; and the Kellogg Institute at the University of Notre Dame, USA.

With four Principal Investigators (PIs), fifteen Project Managers (PMs) with special responsibility for issue areas, more than thirty Regional Managers (RMs), 170 Country Coordinators (CCs), Research Assistants, and 2,500 Country Experts (CEs), the V-Dem project is one of the largest social science data collection projects focusing on research.

More information: [V-Dem](#) e [CEI-IUL](#)

International collaboration

Highlight

'Let us think about the fact that women make up the majority of doctorates in most EU countries, statistics show, but are underrepresented in the research profession, the top academic career category and in charge of higher education institutions', as explains Lígia Amâncio, researcher at CIS-IUL and coordinator of SAGE Project at ISCTE-IUL.

This project, funded by the European Commission, brings together a number of universities, and represents An Open Door for Gender Equality in higher education institutions.

The project will run from 2016 to 2019.



An Open Door for Gender Equality

The SAGE (Systemic Action for Gender Equality) project, funded by the European Commission, brings together a number of universities with the aim of implementing intervention plans for gender equality in higher education institutions. ISCTE-IUL is part of this consortium through Lígia Amâncio, a researcher at CIS-IUL.

Trinity College Dublin - Trinity Centre for Gender Equality and Leadership assures the coordination of this research project, which also includes Queen's University Belfast, the International University of Sarajevo, Kadir Has University, Istanbul, Science Po Bordeaux and the University of Brescia.

Based on European policies for gender equality, the work of the SAGE team requires detailed knowledge of the reality of each country involved, defining appropriate strategies and measures. The project also foresees more comprehensive initiatives, namely the drawing up of a Charter of Principles for Equality in Higher Education which other institutions will be invited to join.

More information: [ISCTE-IUL](#) e [SAGE](#)

International collaboration

Highlight

This project aims at developing a growth mindset for teachers and teams of educational professionals in urban settings, and at enabling teachers to develop their students' growth mindset.

The project will run from 2018 to 2021.

Growing in uRban education and diversity (GRIT)

The GRIT project focuses on fostering educational equity in urban educational settings. It addresses two main target groups: (1) indirectly: urban students threatened by early school leaving, and (2) directly: in-service educational professionals which are involved in teaching in urban settings. This project chooses to focus on the matter of early school leaving since urban educational systems are particularly vulnerable to problems associated with early school leaving.

The GRIT-project will design (a) a toolkit for teachers to practice growth mindset in order to develop their students' growth, (b) a guideline (protocol) for teachers to increase students' resilience, (c) a hand-on training for teams of educators to learn this pedagogical & innovative approach, (d) a guideline (protocol) to train teams of educational professionals how to implement the 'growth mindset approach', and (e) an e-book for different stakeholders involved in the struggle against ESL.

Through concrete experimentations in 5 European countries gathering different background and with partners addressing different kind of educators, the GRIT project will allow to enhance this innovative and "bottom-up approach" among these key actors to struggle against Early School Leaving.

More information: [CIES-IUL](https://www.cies-iul.it/)



Highlight

The Youth in Politics project aims to promote a global citizen mindset in Portuguese Parties' Youth wings, highlighting the need for engagement in the issues of education for development.

The project will run from 2016 to 2018.

Collaborations with NGOs

Os Jovens na Política – Participar para a Cidadania Global

O projeto “Jovens na Política – Participar para a Cidadania Global” visa a promoção da Cidadania Global nas juventudes partidárias, para que as problemáticas ligadas à Educação para o Desenvolvimento (ED) sejam integradas nos seus programas de atividade.

A médio prazo, pretende que a Cidadania Global esteja mais presente na ação dos partidos políticos, através da capacitação e mobilização de jovens militantes e simpatizantes, promovendo ações e reflexão em torno da Cidadania Global, em articulação com as dinâmicas locais.

O projeto é co-financiado pelo Camões – Instituto da Cooperação e da Língua, I.P. e tem como parceiros o Centro de Estudos Internacionais do ISCTE – IUL, o Instituto Português do Desporto e Juventude (IPDJ), o Conselho Nacional da Juventude (CNJ) e a Federação Nacional de Associações Juvenis (FNAJ).

More information: [aidglobal](#) e [CEI-IUL](#)

Note: This content is only available in Portuguese.



Highlight

This project tackles the issue of pharmaceutical pollution in wastewater by assessing the technical, social and economic viability of using a combined filter in senior residencies. Its partners are both academics and institutions in the health sector.

The project will run from 2016 to 2019.



Collaboration with health organizations

INNOVEC'Eau

Drug residues in discharges from old people's homes

Innovéc'Eau aims at providing a trans-territorial assessment focused on wastewater stream from elder people residencies from Sudoe area and implementing pilot technologies for drugs treatment and monitoring.

The innovative feature is based on the coupling of physic-chemical test procedure and biological test procedure for the efficient decontamination of wastewater.

Its objective is to apply a prototype at the exit of selected residencies to treat pollutants at source, before their dissolution within the urban sewage network. In another hand, they will develop assessment tools as sensors and electrochemical biosensors in order to monitor the degradability of pollutants both online and in real time.

From the socio-economic point of view, Innovéc'Eau will provide a comparative study regarding medicines prescription and awareness actions. Lastly, they will provide a joint economic viability study between France, Spain and Portugal.

More information: [INNOVEC'Eau](#)

Highlight

ISCTE-IUL research centres have participated in several outreach activities throughout the year to promote science and further strengthen our impact in society.

Outreach activities

BECERID Project

O CIS-IUL é parceiro no projeto Europeu BECERID que visa o lançamento do blog “PrimeirosAnos.pt” e sua utilização como plataforma de aprendizagem aberta para a qualidade, inclusão e diversidade da Educação Infantil nos primeiros anos de vida. Este projeto vai decorrer de 2017 a 2020.

More information: [PrimeirosAnos](#) e [BECERID](#)



European Researchers Night

ISCTE-IUL is one of the partners of the European consortium 'European Researchers' Night', aimed at celebrating science and bringing researchers and citizens closer together.

This initiative, seeks to break the barriers that separate science from citizens and demystify the distant image that the ordinary citizen has of the scientist. It is an opportunity to disseminate the work and innovation of Portuguese researchers and highlight the importance of efficient communication between research centres and civil society.



Highlight

ISCTE-IUL research centres have participated in several outreach activities throughout the year to promote science and further strengthen our impact in society.

Outreach activities

Investment Game

From December 2017 until March 2018, BRU-IUL researcher Luís Oliveira was responsible for the technical coordination of the 16th edition of the Investment Game (*"Jogo do Investimento"*), an outreach activity geared to high school students. This event was a collaboration with software company Ed-Rom.

The investment Game is a theoretical/practical initiative, allowing participants to improve their understanding of capital markets within the context of the functioning of financial markets. In 2018 alone, this activity gathered about 500 high school students from all over Portugal.



Highlight

ISCTE-IUL has projects that aim to study our cultural heritage and preserve our history and traditions.



Preserving knowledge and culture

A nossa música, o nosso mundo: Associações musicais, bandas filarmónicas e comunidades locais (1880-2018)

Este estudo dirige-se ao saber-fazer musical que é voluntariamente tecido em associações/coletividades musicais. Tem como enfoque privilegiado as bandas filarmónicas, instituições que apesar de terem uma grande participação na vida dos portugueses ao longo de séculos, só desde o virar do século têm conquistado um continuado interesse académico.

The project will run from 2016 to 2019.

More information: [CIES-IUL](#)

Note: This content is only available in Portuguese.

The Portuguese National Laboratory for Civil Engineering and the History of Architecture Research

The History of Architecture and Urbanism in Portugal updating concern through the knowledge of the 'Scientific Research in Architecture' developed in the Portuguese National Laboratory for Civil Engineering (LNEC).

The interdisciplinary lines of investigation examined in LNEC aim to assist the Government in public policies prosecution. Originally constituted to support the country in the public works development, LNEC achieved worldwide recognition, but the socioeconomic changes witnessed by LNEC had profound implications in the scientific-technological research over the years.

It is essential to evaluate systematically the importance of this public institution in the research of Architecture, knowing the history, themes and methodologies of research, participants and centers/researchers of reference, in order to contribute to the knowledge of a Cultural Heritage, archived between Engineers and developed, over the last fifty years, by Architects.

The project will run from 2017 to 2023.

More information: [DINÂMIA'CET-IUL](#)

Main sustainability memberships and partnerships

Memberships



Partnerships

